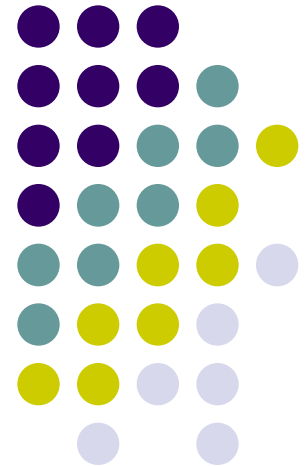


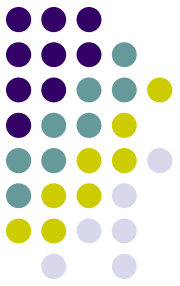
# Sammanställning

---

Ritsteknik  
Facit Snitt

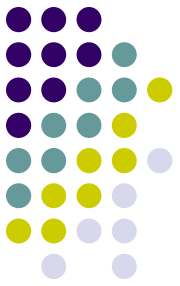


# Regler



- Ritteknik bygger på regler som alla måste följa.
- Kallas för Standardisering
- I Europa följer vi samma regler
- USA har nästan samma regler, skiljer dock vid vyplacering

# Regler



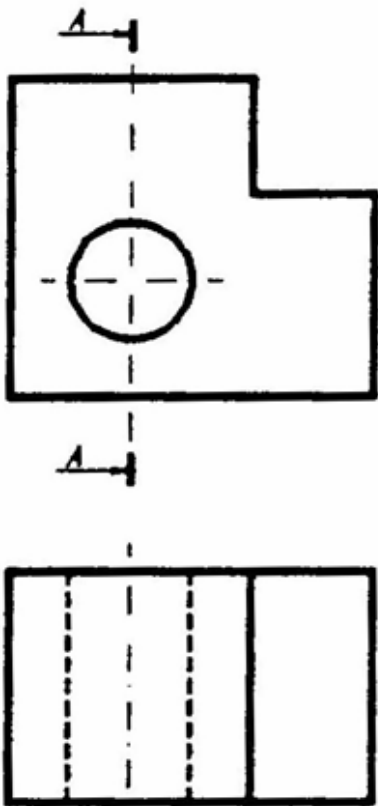
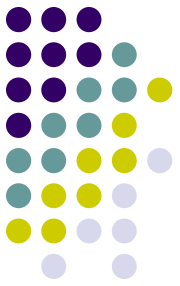
- Europa använder regler för vyplacering enligt följande:

FRAM-  
VY

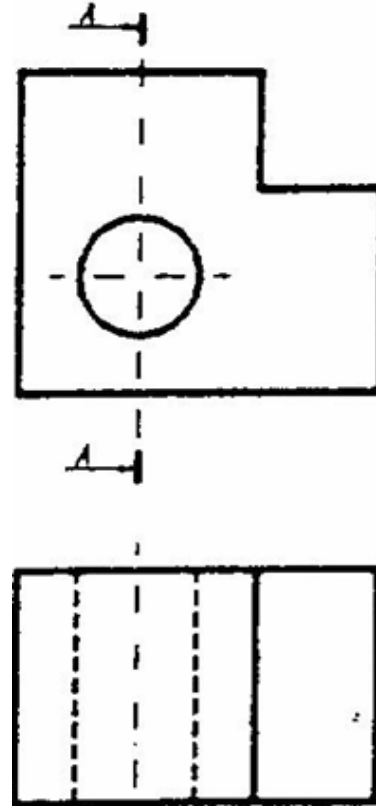
VÄNSTER  
SIDOVY

OVAN-  
VY

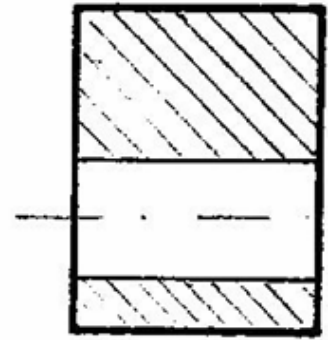
# Snitt



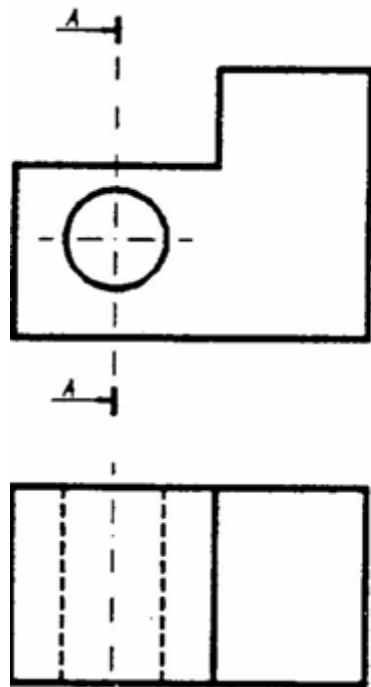
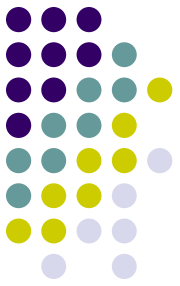
Snitt A-A



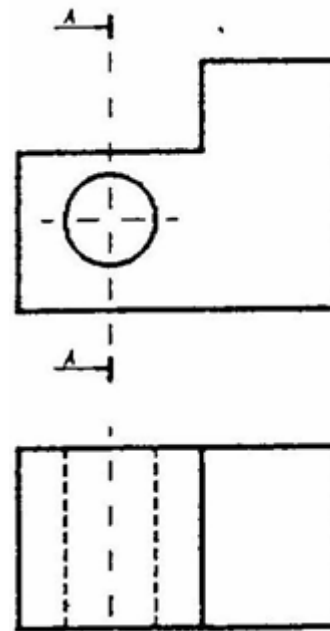
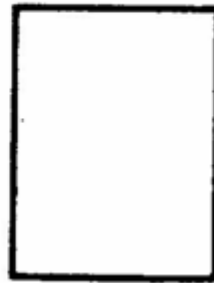
Snitt A-A



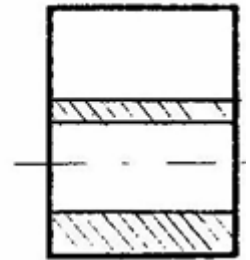
# Snitt

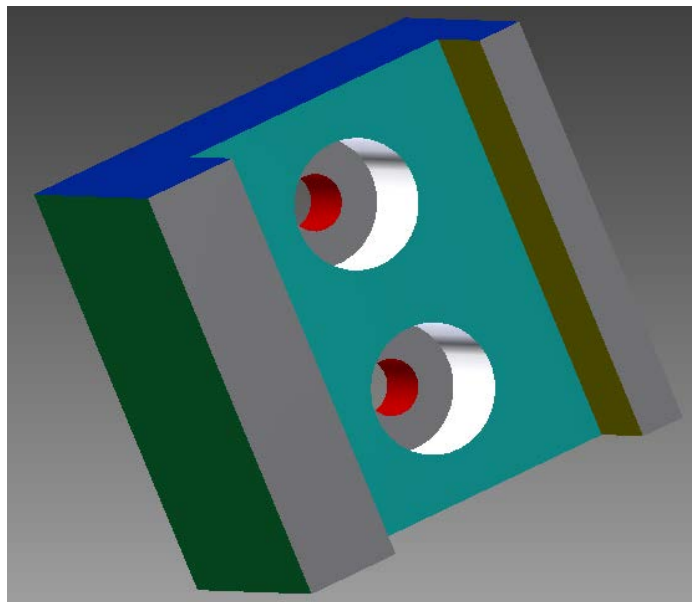
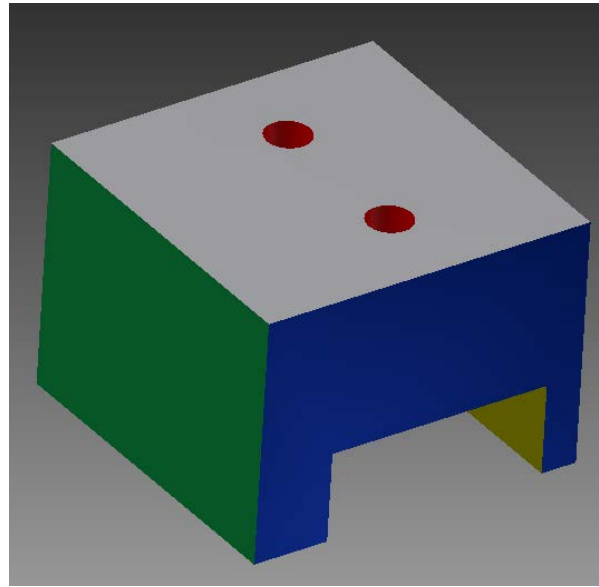
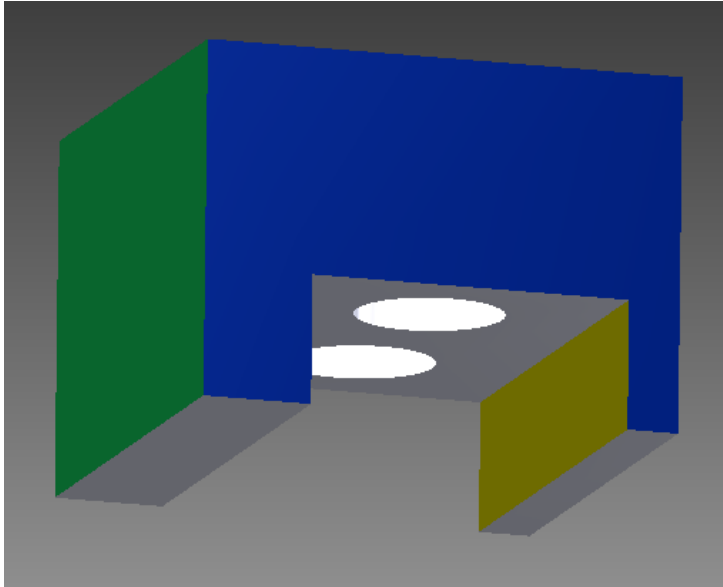


Snitt A-A



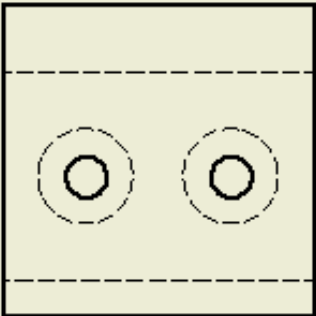
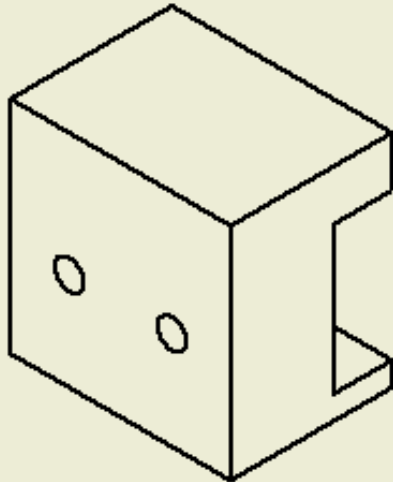
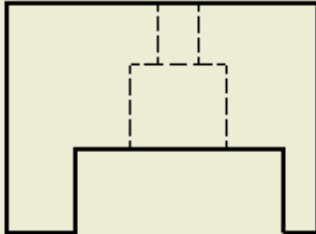
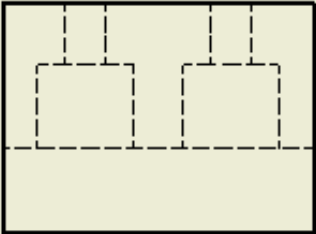
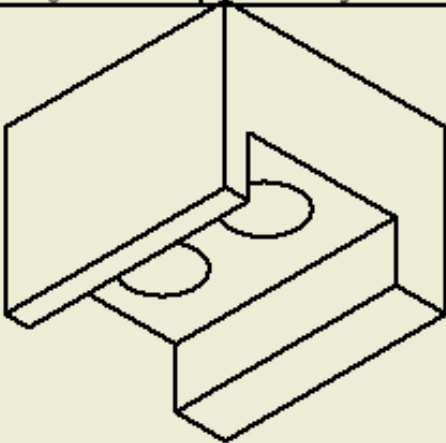
Snitt A-A



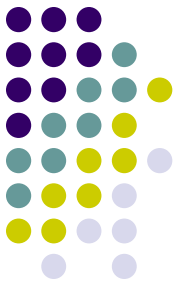


Snitt 5

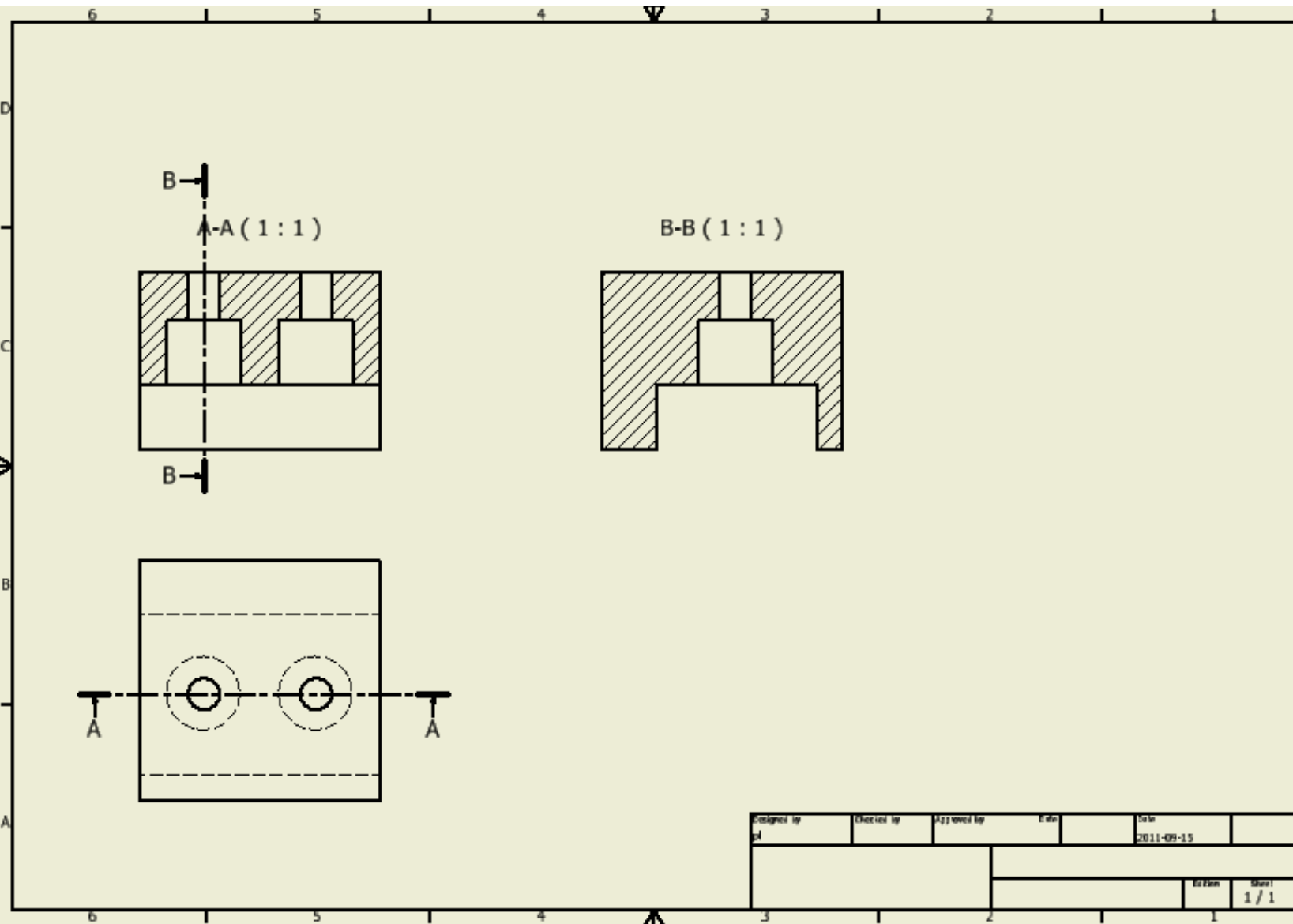
Snitt 5 ritad utan snitt. OBS ! Centrumlinjer saknas! Skall finnas med.



Designed by	Checked by	Approved by	Date	Scale
sl			2011-09-15	
			Edison	Sheet
				1 / 1

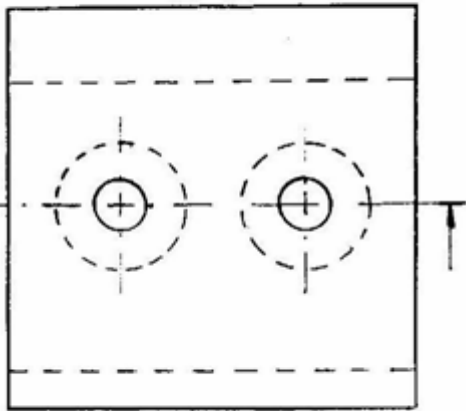
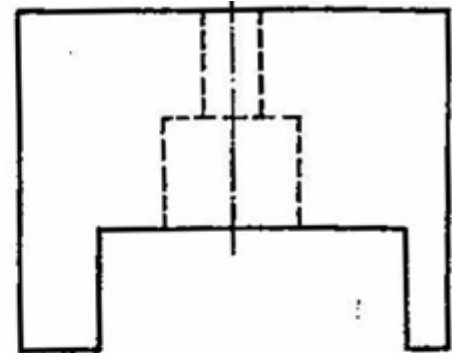
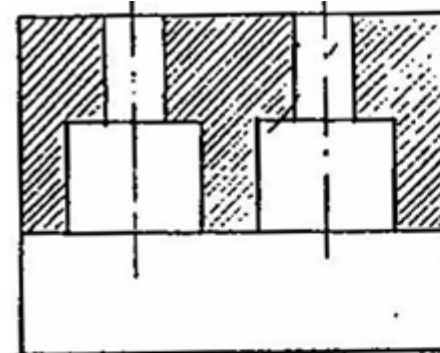
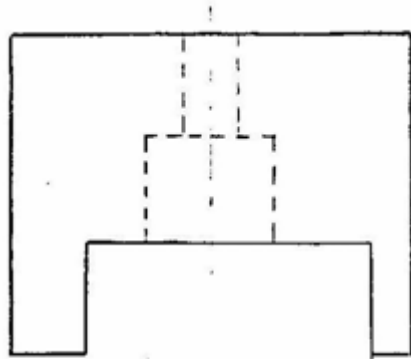
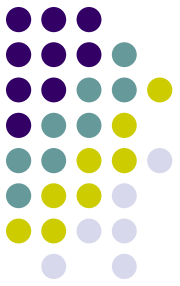


Snitt 5 med snitt A-A och med ett nytt snitt B-B istället för sidovy med skymda konturer . OBS! centrumlinjer skall också ritas

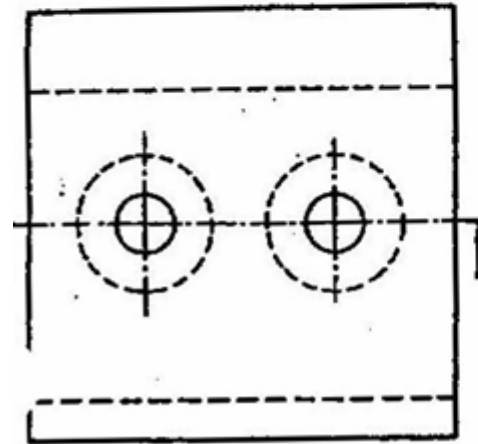




# Snitt 5



Rita framvyn i snitt



**SLUT !**

